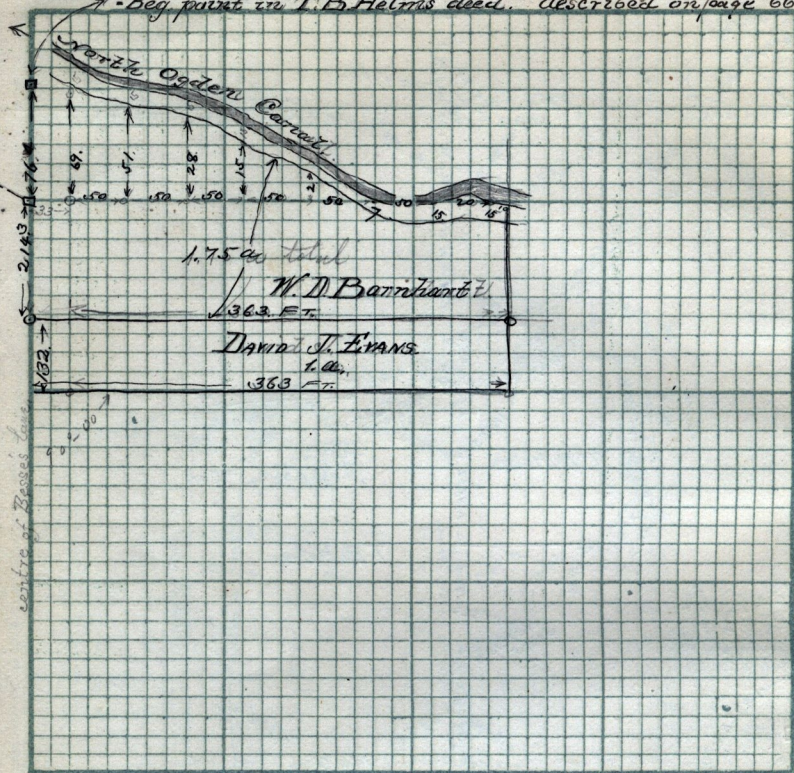


7 - Beg point in T.B. Helms deed. described on page 66 -



Scale: Chains per inch.

Copy of deed from Cha^s W. Thornton to John I. Hickerstaff
 Oct. 1871. G-278 - Pt N.W. 1/4 Sec. 30 - T-7-N-R-1-W. Beg. 39 rods
 S. 2nd 20. rods N. of N.E. cor. rd 1/4 Sec. W 10.45 ch. N 9.25 W 4.55 S 23.55
 E 60 rods N 14.33 ch to brg. 27. ³⁴/₁₆₀ a. Also, another portion of said
 Quar. Brg. 20. rods 49. ft E. of S.W. cor. E. 6.00 ch N 8.00 ch W 3.65 ch
 S.W. 8.83 ch to brg. 3. ¹³⁵/₁₆₀ a.